



HOSPITALITY
FLOOR, WALL & FINISHING SOLUTIONS

Gerflor
the flooring group

CONTENTS

- General presentation
 - Wherever you are, we can serve you p. 5
 - Specific solutions for every market need p. 6
 - The go-to expert for hospitality p. 7
 - Collections at the cutting edge of design p. 8
 - Complete solution for hospitality p. 10
 - Gerflor, value proposition p. 12
 - Whatever your requirements, we have the solutions for your hotel! p. 13
 - Advantages of Gerflor flooring p. 14
- Specific solutions by area
 - Lobby & Restaurants p. 16
 - Rooms p. 18
 - Bathrooms p. 20
 - Leisure & recreation p. 22
 - Meeting rooms, convention centres & logistics p. 24
 - Reception & entrance halls p. 26
- Gerflor service p. 30

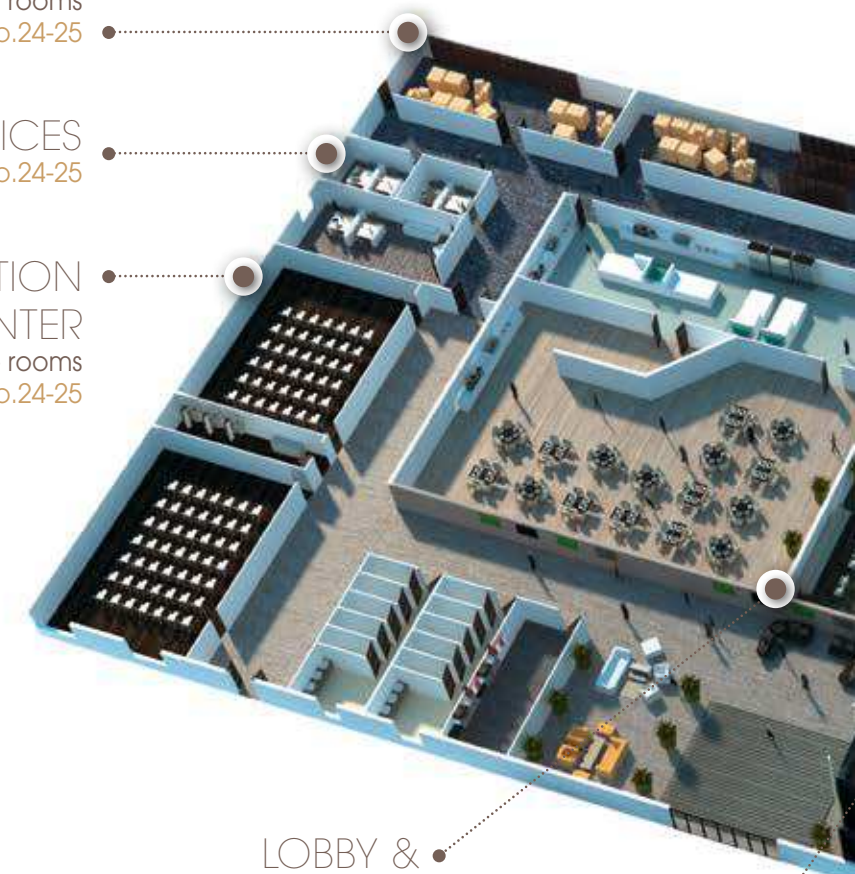
LOGISTICS
Kitchen, stocking &
laundry rooms
p.24-25

OFFICES
p.24-25

CONVENTION
CENTER
Conference rooms
p.24-25

LOBBY &
RESTAURANTS
p.16-17

RECEPTION &
ENTRANCE HALLS
p.26-27



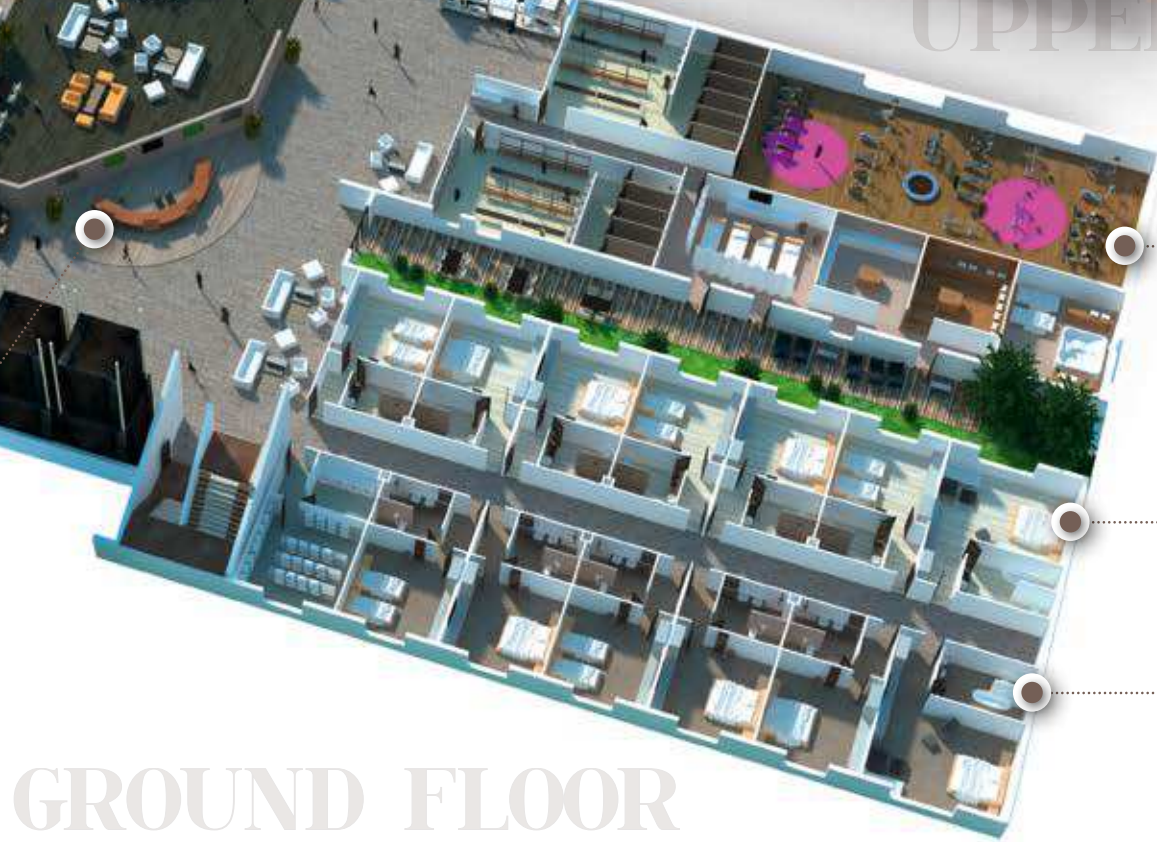
COMPREHENSIVE SOLUTIONS FOR ALL YOUR AREAS INCLUDING: FLOORS / WALLS / INTERIOR FINISHES



- ROOMS
p.18-19
- BATHROOMS
p.20-21

● SHOPS
p.24-25

UPPER FLOORS



● LEISURE & RECREATION
p.22-23

● ROOMS
p.18-19

● BATHROOMS
p.20-21

GROUND FLOOR



Worldwide presence and proximity to our customers through:

26 subsidiaries and a broad network of partner distributors
15 manufacturing plants and logistic hubs

- sales offices
- manufacturing plants and logistic hubs



WORLDWIDE PRESENCE

REVENUE
791 MILLION EUROS

WORKFORCE
3300 EMPLOYEES

**WHEREVER
YOU ARE,
WE CAN
SERVE YOU**

SPECIFIC SOLUTIONS

FOR EVERY
MARKET NEED

HOSPITALITY
HOTELS &
RESTAURANTS

HOUSING
HEALTHCARE
EDUCATION
INDUSTRY
OFFICES
SPORT
RETAIL
TRANSPORT

9 MARKETS



THE GO-TO EXPERT FOR HOSPITALITY



LODGING

Hotels, B&B's, resorts, leisure,
convention centers, ...



THEME & AMUSEMENT PARKS

E.g. Centerparcs, Nature resorts, Disneyland...



FOOD SERVICE

Restaurants, catering,
fast food restaurants, ...



GAMING INDUSTRY

Casinos, bingo halls, etc.



THEY TRUST US

- Starwood
Hotels and Resorts
- Hilton
Worldwide
- Meliã
Hotels International
- IHG
- NH Hotels
- Marriott
- Wyndham
- Home Inn
- Accor
- Carlson Rezidor
Hotel Group
- Tui Group
- Best Western
- Choice Hotels

RECENT REFERENCES

- Van der Valk - Beveren
- Marriott Auditorium - Madrid
- Novotel - Sevilla
- Hilton - Barcelona
- Crown Plaza - Brussels
- Easyjet Hotels - NL
- Mercure hotels
- Earl of Sandwich - Qatar
- Holiday Inn - Chicago
- Sheraton - Istanbul
- Melia Palace Atenea - Esp

COLLECTIONS

AT THE CUTTING
EDGE OF DESIGN

CREATE YOUR OWN ATMOSPHERES
TO CUSTOMIZE YOUR HOTELS!

**Gerflor materials are recognized by designers
and trendsetters worldwide.**

Creation 70 has been awarded the Reddot award 2016.



reddot award 2016
winner







FLOORS



SHOWER SYSTEM



ENTRANCE MATS



WALL PROTECTION



Gerflor and its subsidiaries SPM, Romus and Gradus

have developed comprehensive collections of floor coverings, wall coverings, wall protections and interior finishes⁽¹⁾ for each area. You can thus create the perfect atmospheres matching the different functions of these areas.

⁽¹⁾ SPM: specialist in wall protections and handrails
Romus: specialist in entrance mats and finishing profiles
Gradus: specialist in finishes and carpet tiles

COMPLETE SOLUTION FOR HOSPITALITY



FLOORS



STAIRS



SPORTS FLOORING

GERFLOR, VALUE PROPOSITION

RENOVATION WITHOUT CLOSING DOWN YOUR PREMISES

- **Modular solutions** enable installation in busy areas
- **No exploitation losses.**

DESIGN

- Over **4000 designs** and **colours**
- Integrated **bathrooms in the rooms.**

EASY CLEANING

- **Easy and cost-effective cleaning**
- **Quick visual control** of the cleanliness.

COMFORT

- Sound insulation and reduced impact noise up to **19 dB**
- **Cosy and home look** and feels.

DURABILITY

Longlasting floors and **designs.**

ACCESSIBILITY & SAFETY

Safe shower units, Gerflor floors including antislip floorings with brand new designs can be matched with the latest generation of wall coverings and interior finishes (handrails etc.). Shower units can be installed for people with reduced mobility.

ENVIRONMENTALLY-FRIENDLY SOLUTIONS

Gerflor is **strongly committed to developing eco-friendly solutions and high environmentally-friendly products.**



WHATEVER YOUR
REQUIREMENTS,
**WE HAVE
THE SOLUTIONS**
FOR YOUR HOTEL!

ADVANTAGES OF GERFLOR FLOORING

Do you usually use carpets, tiles or laminates for your hotels?
Do you think there is no better quality/price ratio?

Do you know that, for the same budget, there is a kind of flooring that has unparalleled advantages?
Vinyl Flooring.

	Laminate	Ceramic	Carpet	Vinyl Flooring
> Design / Visual appearance	Smooth surface, chamfer optional	Rough mineral appearance	Smooth appearance	Realistic wood (graining, chamfer), woven or mineral decor
> Sound insulation from one floor to another	no Need for a screed or a soundproofing underlay		YES	YES
> Sound reduction while walking	no Strong resonance to high heels or falling objects		YES	YES
> Walking comfort	no Hard surface and cold sensation when walking barefoot		YES	YES Flexible flooring, no cold sensation even barefoot
> Insensitivity to impacts caused by falling objects	no	no	YES	YES
> Compatibility for wet rooms / Water resistance	no ⁽¹⁾	YES	no	YES
> Quick installation	YES	no	no	YES (looselay installation)
> Quick renovation without disruption	YES	no	no	YES (looselay installation)
> Reduced downtime of premises / Quick return to service	YES	no	no	YES (looselay installation)
> Ease of maintenance / Hygiene	YES	YES	no	YES

(1) Except after validation of the installation protocol





Lobby & Restaurants

For these areas subject to particularly high traffic, Gerflor offers a range of floors, walls and interior finishes with classic, chic or modern shades which are resistant and easy to clean.

To ensure perfect hygiene, Gerflor recommends installing Romus dirt-trapping mats to absorb moisture and to remove dirt at the entrance of the hotel.





ENTRANCE MATS & WALL PROTECTION COLLECTIONS

These solutions will harmoniously complement your atmospheres while extending the life of your infrastructure.



LUXURY VINYL TILES COLLECTION

with a realistic wood or concrete finish, this collection will make your hotel stand out with a unique design.





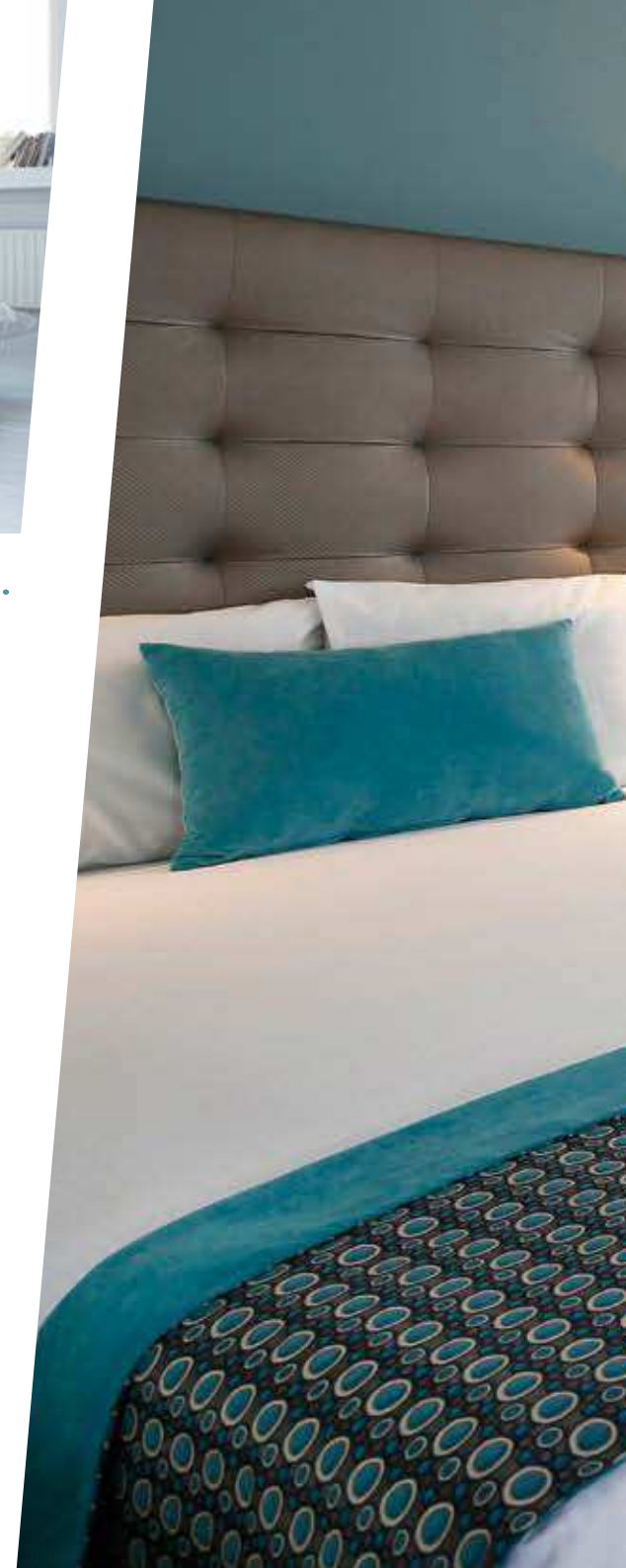
FLOOR COLLECTIONS

With a wooden, woven or mineral finish or with bold designs, these printed collections will surprise you with their realism and originality.



WALL PROTECTION AND DECORATION COLLECTION

You can create custom head-boards.



A modern hotel room featuring two beds with white linens and patterned runners. The room has a light teal wall, a tufted headboard, and light wood flooring. A window with white curtains is visible in the background.

Rooms

For these quintessential places of rest, Gerflor has developed soft and soothing shades of floor and wall coverings to ensure the well-being and relaxation of your customers, with optimal acoustic comfort and safety.

Bath-rooms

For these perfect islands of privacy, Gerflor offers a complete solution (floor, wall coverings and interior finishes) combining design, safety and accessibility.



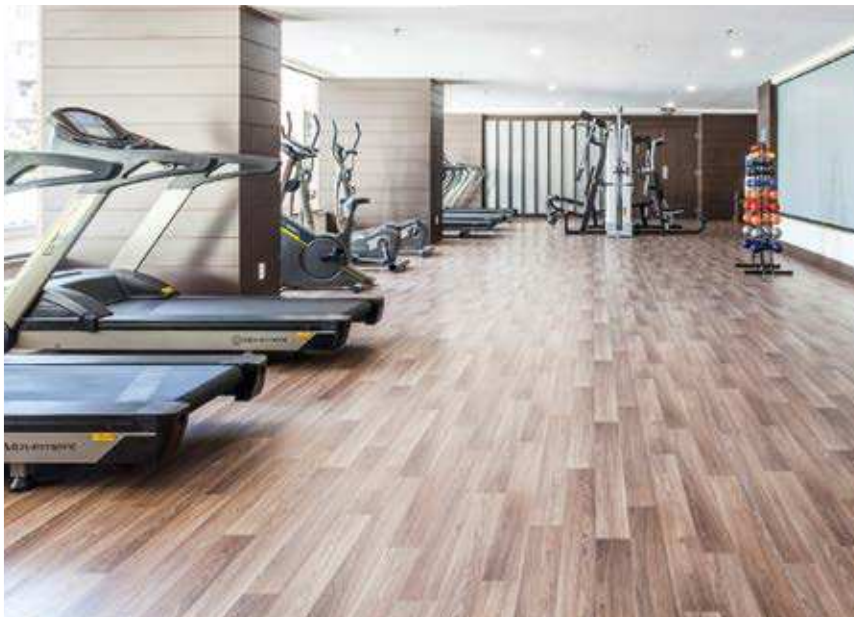
SHOWER SYSTEM COLLECTION

With neutral or coloured shades, in resolutely modern finishes, we bring you different decorative floor and wall collections, which can be mixed and matched, and which ensure hygiene and safety.



SPORTS FLOORING COLLECTION

Highly resistant decorative flooring that can meet the constraints of sport and relaxation areas.



WALL PROTECTION COLLECTION

Protective and trendy, this collection will blend in with the decor.



Leisure & Recreation

For sport or recreation rooms, the atmosphere must be carefully created to make this special time particularly enjoyable.



Meeting rooms, convention centres & logistics

Gerflor offers specific solutions for each area: aesthetic and acoustic floors for offices, shops and conference rooms, damp-resistant for linen rooms and changing rooms, hygienic and slip resistant for kitchens, resistant for stores.





WALL PROTECTION COLLECTION

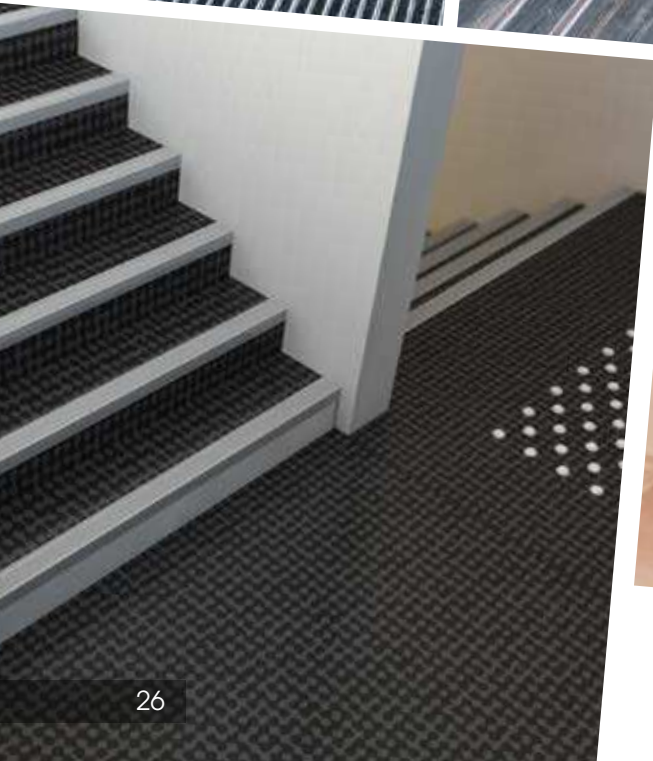
bumpers and corner protections
Solutions to protect your hotels from impacts, friction and frequent washing.



FLOOR COLLECTIONS

Resistant, acoustic or slip resistant floors designed to meet the constraints of each area.





COMPLETE SOLUTION FOR ACCESSIBILITY

Warning surfaces

- with tactile studs
- guiding strips

Signage

- Inlaid floor signage and
customized doors and walls.

Steps

- Stairnosing & antislip flooring

Entrance mats

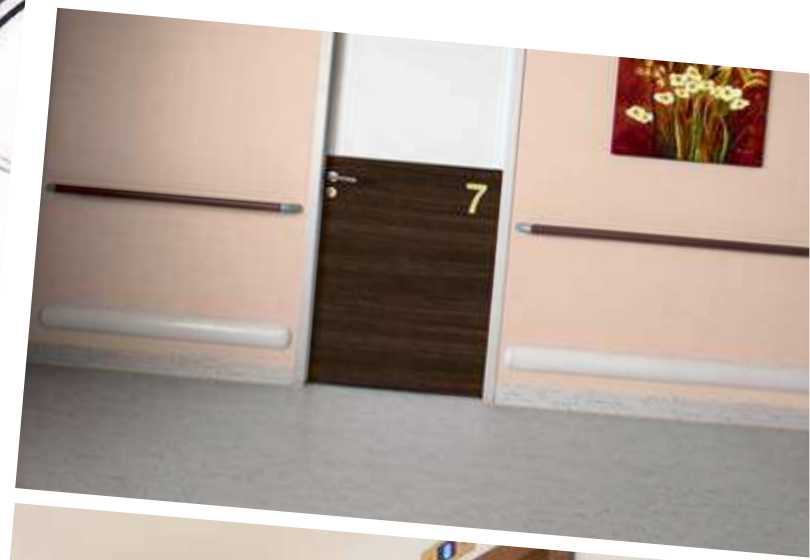


Reception & entrance halls

Hotels are subject to accessibility regulations. Gerflor, SPM, Romus & Gradus have developed comprehensive solutions (mats, signage, etc.) that will enable your customers to find their way around easily and move in complete safety.



FLOOR & WALL COLLECTIONS
Highly resistant decorative floorings
and wall protection.



COMMITTED TO SUSTAINABLE DEVELOPMENT

All of the brand's products are eco-designed based on a life-cycle analysis model in order to reduce their environmental impact. We recycle and give our products more than one life.

The environmental excellency achieved with every product includes the use of healthy raw materials, low VOC emissions for a better indoor air quality, a reduced environmental footprint and 100% recyclable materials.



Environmental Profiles Scheme
Certificate Number ENP 359





100% REACH compliant:

- Raw material
- Recycled content



Environmental Products Declaration (EPD) available for all products ranges

Lowest life cycle costs



100% recyclable products

Targeting more and more recycled content

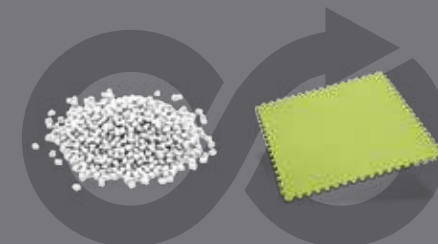


Lowest emitting products

Adhesive-free solutions

GIVING PRODUCTS MORE THAN ONE LIFE

- 100% recyclable products
- On average, 25% recycled content
- Post-manufacturing and post-installation waste recycled... back to new floors



- and our floors reinvent themselves





INTERIOR DESIGNER

interiordesigner.gerflor.com

Select your flooring, choose your design or colours and visualise your customized space!



FOR MORE INFORMATION ON GERFLOR GROUP AND PRODUCTS, PLEASE REFER TO:

> WEBSITE



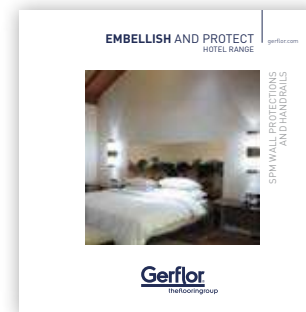
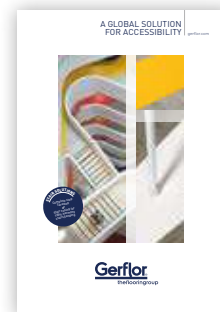
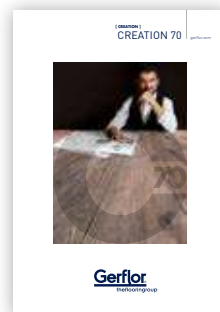
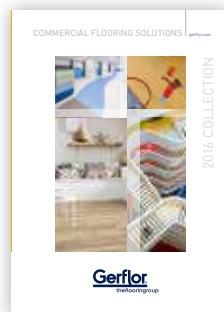
www.gerflor.com

> VIRTUAL LIBRARY



<http://www.gerflor.com/services/professionals/virtual-library.html>

> GUIDES / SAMPLE CARDS



ASIA: Gerflor Asia
Tel: +86 21 6357 8818 - Fax: +86 21 6357 8998
e-mail: gerflorasia@gerflor.com

AUSTRALIA/NEW ZEALAND: Gerflor Australasia Pty. Ltd
Australia Tel: 1 800 060 785 - New Zealand Tel: 0 800 630 119
e-mail: gerflor@gerflor.com.au

AUSTRIA/SWITZERLAND: Gerflor GmbH
Tel: +43 (0)72 29/70 800-0 - Fax: +43 (0)72 29/70 800-218
e-mail: austria@gerflor.com - switzerland@gerflor.com

BELGIUM/LUXEMBURG: Gerflor Benelux
Tel: +32 (0)3 766 42 82 - Fax: +32 (0)3 766 29 14
e-mail: gerflorbe@gerflor.com

CANADA: Gerflor International
Tel: +1 438 333 0752 - Fax: +1 438 380 5425
e-mail: gerflorcanada@gerflor.com

CHINA: Gerflor floorings (China) Co. Ltd.
Tel: +86 21 6357 8818 - Fax: +86 21 6357 8998
e-mail: gerflorchina@gerflor.com

FINLAND: Gerflor Oy
Tel: +358 (0) 10 6 17 5150 - Fax: +358 (0) 10 617 5152
e-mail: info@gerflor.fi

FRANCE: Gerflor - Service Express:
N°Azur 0 810 569 565 **N°Azur (Taxi) 0 810 569 570**
e-mail: contactfrance@gerflor.com

GERMANY: Gerflor Mipolam GmbH
Tel: +49 (0)22 41-25 30-0
e-mail: gerflormipolam@gerflor.com
Kunden-Service
Tel: +49 (0) 22 41-25 30-136 - Fax: +49 (0) 22 41-25 30-100
e-mail: kundenservice@gerflor.com
SAT Service und Anwendungstechnik
tel: +49 (0)22 41-25 30 555 - Fax: +49 (0)22 41-25 30 550
e-mail: technik@gerflor.com

IRELAND: Gerflor Ltd
Tel: +353 (0) 42 966 1431 - Fax: +353 (0) 42 966 1759
e-mail: gerfloriri@gerflor.com

ITALY: Gerflor S.p.A.
Tel: +39 02 90 40 10 - Fax: +39 02 90 42 74 84
e-mail: gerflorititalia@gerflor.com

LATIN AMERICA (Brazil): Gerflor América Latina
Tel: +55 11 38 48 20 20
e-mail: gerflor@gerflor.com.br

MIDDLE EAST: Gerflor Middle East
Tel: +966 13 847 1779 - Fax: +966 13 847 1781
e-mail: info@gerflorme.com

NETHERLANDS: Gerflor Benelux
Tel: +31 (0)40 266 17 00 - Fax: +31 (0)40 257 46 89
e-mail: gerflom@gerflor.com

OTHER COUNTRIES: Gerflor International
Tel: +33 (0)4 74 05 40 00 - Fax: +33 (0)4 74 05 03 13
e-mail: gerflorcontract@gerflor.com

POLAND: Gerflor Polska Sp z o.o
Tel: + 48 61 823 34 01 - Fax: + 48 61 823 34 33
e-mail: info@gerflor.pl

PORTUGAL: Gerflor Iberia, SA
Tel: +351 21 843 95 49 - Fax: +351 21 846 55 44
e-mail: gerflorportugal@gerflor.com

RUSSIA: Gerflor zao
Tel./Fax: + 7 495 785 23 71
e-mail: gerflorussia@gerflor.ru

SCANDINAVIA: Gerflor Scandinavia a.s.
Tel: + 47 64 95 60 70 - Fax: + 47 64 95 60 80
e-mail: gerflorscand@gerflor.no

SPAIN: Gerflor Iberia, SA
Tel: +34 91 653 50 11 - Fax: +34 91 653 25 85
e-mail: gerfloriberia@gerflor.com

UNITED KINGDOM: Gerflor Ltd
Sample service: Contractuk@gerflor.com
Office Tel: + 44 (0) 1926 622 600 - Fax: + 44 (0) 1926 401 647

USA: Gerflor North America
Tel: 877 GERFLOR (437 3567) - Fax: 847 394 3753
e-mail: info@gerflorusa.com



Gerflor Gerflor Gerflor Gerflor Gerflor Gerflor Gerflor Gerflor

Gerflor Gerflor Gerflor Gerflor Gerflor Gerflor Gerflor Gerflor Gerflor

Gerflor Gerflor Gerflor Gerflor Gerflor Gerflor Gerflor Gerflor Gerflor

Gerflor Gerflor Gerflor Gerflor Gerflor Gerflor Gerflor Gerflor Gerflor

Gerflor Gerflor Gerflor Gerflor Gerflor Gerflor Gerflor Gerflor Gerflor

Gerflor Gerflor Gerflor Gerflor Gerflor Gerflor Gerflor Gerflor Gerflor

Gerflor Gerflor Gerflor Gerflor Gerflor Gerflor Gerflor Gerflor Gerflor

Gerflor Gerflor Gerflor Gerflor Gerflor Gerflor Gerflor Gerflor Gerflor

Gerflor Gerflor Gerflor Gerflor Gerflor Gerflor Gerflor Gerflor Gerflor

Gerflor Gerflor Gerflor Gerflor Gerflor Gerflor Gerflor Gerflor Gerflor

RC Lyon B 726 580 152 - ipe - Printed in GEE 209 406 - 06/2016 - 2004 4661 - Indicative documentation cost: 2,35€

Gerflor International
Tel: +33 (0)4 74 05 40 00
Fax: +33 (0)4 74 05 03 13
e-mail: gerflorcontract@gerflor.com

Gerflor
the flooring group